

**THORNER NEIGHBOURHOOD PLAN
2021 - 2033
Consultation Statement
JULY 2023**



THORNER PARISH COUNCIL

Thorner Steering Group Committee 2023

Richard Bould

Graham Castle

Victoria Goodall-Fawcus

Tom Mycock

Steven Wood

Rosamund Brittain

Thorner Parish Council – Neighbourhood Plan

2022 – 2033

Consultation Statement

June 2023

Introduction and Background

Thorner is situated 8 miles north-east of Leeds. It is a prosperous rural village with strong links to its surrounding agricultural landscape.

According to the 2021 Census, the Parish of Thorner had a population of 1634, a slight decrease on the 2011 figure of 1646. The population of Leeds increased by 8% over the same period. Almost 33% of the population were 60 years or older, against an average nationwide average of 24.2% (both up on the 2011 figures)

The neighbourhood planning process, which commenced in May 2012 has developed a coherent vision for the future of the parish:

"Our vision is to maintain the character of Thorner as a distinctive rural community set in a special landscape setting, conserving its rich historic and architectural heritage, and ensuring that new development reflects the qualities and characteristics that people value in the Parish.

Existing green spaces within the parish will be protected and retained for the benefit of the community, who will also benefit from enhanced pedestrian and cycle connectivity."

CONTENTS

	Page
Introduction	5
Aim of Consulting on the Plan	5
Background to the consultation	5
Defining the Neighbourhood Plan Area	6
Aim of the Plan in Brief	6
Steering Group Setup	6
Neighbourhood Plan Steering Group (NPSG) Meetings	7
Funding and Support	7
Theme Groups	7
Consultation Methodology	7
Public Consultation	8
List of People and Bodies consulted	11
Summary of findings - all sources	12
Regulation 14 - Pre-Submission Consultation	12
Conclusion	12
APPENDIX 1 - Terms of Reference	13
APPENDIX 2 - Details of the consultation replies	15
APPENDIX 3 - Details of the consultation methods	21
APPENDIX 4 - Reg. 14 Notifications	24

Introduction

This Consultation Statement has been prepared to fulfil the legal obligations of the Neighbourhood Planning Regulations 2012. Section 15(2) of Part 5 of the Regulations sets out what a Consultation Statement should contain:

- details of the persons and bodies who were consulted about the proposed neighbourhood development plan
- an explanation how they were consulted
- a summary of the main issues and concerns raised by the persons consulted
- a description of how these issues and concerns have been considered and, where relevant, addressed in the proposed Neighbourhood Plan.

Aim of Consulting on the Plan

The aim of the Thorner Parish Neighbourhood Plan engagement process was to:

- Inform residents, local businesses, and other stakeholders about the neighbourhood planning process and to invite their participation so that local opinion informed the plan
- Ensure that consultation events took place at critical points in the process.
- Ensure that as wide a range of people as possible were involved, that they could receive information and could provide feedback in a way that suited them.
- Ensure that information was readily available and accessible to everyone.
- Make sure that consultation feedback was available as soon as possible after events

Background to the consultation

Thorner Parish Council decided to designate the whole of the Thorner Parish as the Neighbourhood Area and took the decision to set up a working group to formulate a neighbourhood plan at their meeting on 6th November 2012. The Local Planning officer was informed.

The intention to create a Neighbourhood Plan was publicly announced via the village magazine, a new page was added to the Parish Council website and posters advertising a public meeting about the Neighbourhood Plan were erected around the village. These steps were taken to ensure maximum community awareness and engagement. It was also deemed important that all plan activities were documented and that information was readily accessible to the community via multiple channels.

Over the last ten years the members of the Neighbourhood Plan Steering Group (NPSG) and the Parish Council have actively sought the views and opinions of the residents of Thorner village. We have not had any adverse comment regarding the Vision stated in the Plan. Everyone wishes to keep the green spaces, maintain the community ethos and prevent unsympathetic development.

Members of the NPSG have changed over time but they have always been a representative cross section of village society. Members have included local farmers, professional people, members of the local village societies, retirees and local business owners.

Defining the Neighbourhood Plan Area

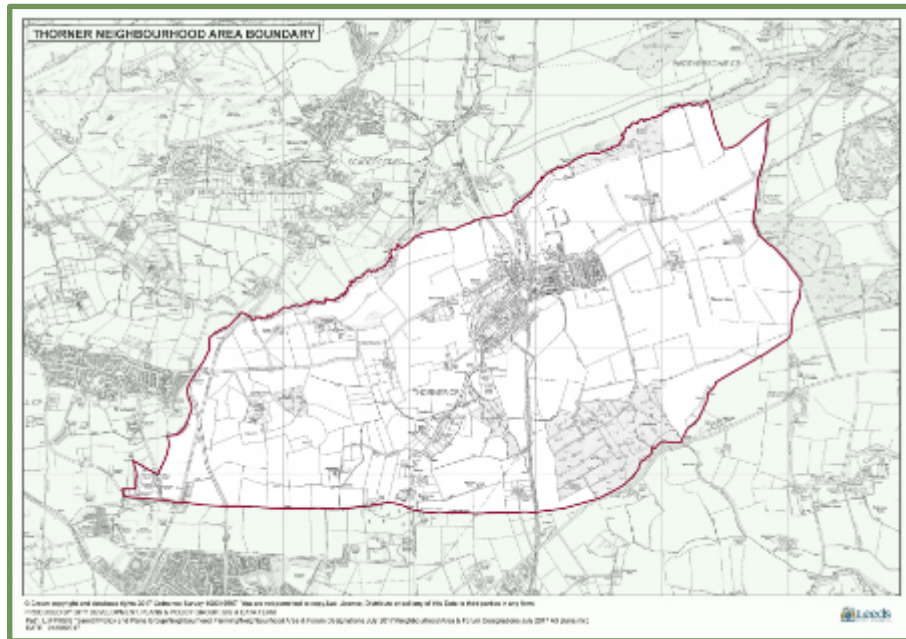
On 3rd July 2012, The Parish Council agreed to submit a request for N/Plan Area Designation to Leeds Metropolitan Borough Council. This was approved on 31st January 2013 by Leeds City Council. The Plan covers the period up to 2033.

Aim of the Plan in brief

The Thorner Parish Neighbourhood Plan sought to demonstrate specific and local planning policies for the development and use of land within the Designated Area. The Neighbourhood Plan would provide a vision for future development in Thorner Parish based on the views of the local community and supported by environmental, socio-economic and demographic data.

Steering Group set up

On 4th April 2013 the Parish Council welcomed volunteers to appoint a Steering Group and launch the N/Plan. The Steering Group's mandate was to drive the process, consult with the local community, gather evidence to support emerging policies, and deliver the Plan. Members of the



Steering Group (NPSG) were appointed from those volunteering during the meeting. The NPSG originally consisted of:

Cllr Diane Gibbins (chair), Cllr Graham Castle, Cllr Victoria Goodall-Fawcus, Steven Wood, Sue Lawrenson, Richard Bould, David Arundel, Scott Marshall, Kate James (Parish Council Clerk). Cllr Tom Mycock (Chairman of the Parish Council), Cllr Gwen Brown, Andrew Walmsley, Alan Haigh. The Parish Council agreed Terms of Reference for the NPSG on 10th July 2013 (**appendix 01**).

Neighbourhood Plan Steering Group (NPSG) Meetings

The NPSG met regularly and in accordance with Parish Council regulations Meetings were open. The Parish Clerk issued minutes and agendas as required. Parish Councillors reported back to the monthly Parish Council meetings. (Meetings are listed overleaf.)

Meetings are listed below:

Table of NPSG Meetings from 2013 to 2023				
2013	2014	2015	2016	2017
23 rd May 27 th June 25 th July 5 th September 16 th October 12 th December	27 th February 30 th June 1 st September 23 rd October 21 st November	28 th January 9 th March	28 January 25 th February 31 st March 21 st April 9 th June 11 th August	Various ongoing consultations with Leeds city Council. New consultant was appointed to assist drafting the Plan
2018	2019	2020	2021	2022
16 April 12 th July	24 th April 17 th July 7 th August 30 th October 30 th November	22 nd January 27 th August	18 th May 23 rd June Consultation 19 th July to 31 st August	11 th April
2023	2024			
25 th January 7 th March 4 th May 13 th July				

Funding and support

A grant of £6,984 was awarded on 15th July 2013 by “**Supporting Communities in Neighbourhood Planning.**”

This money went towards the cost of a planning consultant, payments for leaflets and meeting venues.

Theme Groups

Initially it took some time to formulate a basic neighbourhood plan. As people became more familiar with the issues discussed volunteers undertook to lead on specific themes and policies. Topics were then discussed and agreed in open meetings. A draft Plan was drawn up and regularly updated and circulated for further information and discussion until the Pre-Consultation Plan was agreed.

Consultation Methodology

It was recognised that Thorner Parish residents had already been involved in the development of a Village Design Statement. Therefore, it was important to make sure people were aware that the Neighbourhood Plan would be more comprehensive and would have greater statutory weight than the previous design statement. The NPSG identified the need for regular communication in different formats to ensure maximum reach across the whole community. Examples of the leaflets, notices and letters are attached as appendices. Communications methods adopted were:

- i. Articles in the Parish Magazine
- ii. Notices (Parish Notice Board, Village Shop and Post Office)
- iii. Electronically via the Parish website (including electronic feedback forms)
- iv. Letters (email or hard copy as appropriate to recipient)
- v. Community Consultation events
- vi. Participation in other village events, for example, the Annual Gala
- vii. Informal face to face meetings
- viii. Monthly update from the Steering Group at the Parish Council meeting.

	Colour key	Event Category	
		Parish Council	
		Newsletter distribution	
		Steering Group Activity	
	Date	Comment	Action
	February 2011	The Thorner Village Design Statement was adopted by Leeds City Council as a Supplementary Planning Document in February 2011.	
		2012	
	June 2012	Thorner Parish Council agreed to set up a working group to progress a neighbourhood Plan	
	July 2012	Parish Council will consult with residents via the Newsletter and web site	
	November 2012	It was agreed that it is necessary to appoint a committee to develop the Neighbourhood Plan	
		2013	
	February 2013	The neighbourhood area of Thorner has been officially designated by Leeds City Council.	
	Newsletter February 2013	Parish Newsletter article asking for volunteers to join N/Plan Steering Group Team	
	Newsletter April 2013	Parish Newsletter article. A neighbourhood plan will build on the work of the Village Design Statement. The Localism Act 2011 gives local communities the power to shape and influence development in their area.	
	April 2013	The PC welcomed 4 volunteer residents to Join the N/Plan Steering Group	Agree date 1 st NPSG Mtg
	16 th April 2013	Inaugural Meeting of the N/Plan Steering Group (NPSG).	Parish Councillors explained details of the proposed N/Plan
	14 th May 2023	Annual Parish Meeting. Draft terms of reference circulated. Discussion about the formal constitution of the group	The Clerk sought advice
	23 rd May 2013	2 nd NPSG mtg; Chaired by Cllr D Gibbins. Steering Group planned a Gala stall which will aim to engage members of the community and undertake some initial consultation	
	June 2013	YLCA guidance: Steering Group should be constituted as an advisory group and the draft terms of reference agreed	
	Newsletter July 2013	Parish Newsletter article: Shaping the future of our Village. What will it look like in 10-15 years?	Proposed NP explained in detail for residents
	25 th July 2013	NPSG mtg;	
	6 th August 2013	Funding now received from Locality. It was also agreed to undertake a household survey to gather basic data.	
	3 rd September 2013	Planning Aid will provide support with the development of the Neighbourhood Plan	Report on the meeting with Planning Aid and Leeds City Council
	5 th September 2013	NPSG mtg;	
	1 st Oct 2013	It was agreed to run a final recruitment campaign for volunteers	
	16 th October 2013	NPSG mtg; At that meeting it was agreed to design flyers and posters in order to raise awareness	

Public Consultation Events

- 2 -

	Date	Comment	Action
	5 th November 2013	Four further volunteers have come forward following an article in the newsletter	
	21 st November 2013	NPSG mtg; with drop-in event for volunteers	
	12 December 2013	NPSG mtg; The beginning of the meeting was an open session for residents to find out more, and this was well attended.	The Clerk has contacted all those who volunteered.
		2014	
	Newsletter January 2014	There had been over 20 responses to the newsletter article and short survey published in the newsletter.	
	4 th Mar 2014	it was agreed to produce a reduced content plan based on the Village Design Statement which would just focus on protecting the open/green spaces within the village	
	30 th June 2014,	NPSG mtg; To progress this a plan based on the VDS a mandate (via a questionnaire) was required from residents.	NPSG composed questionnaire for the newsletter
	Newsletter July 2014	The questionnaire ref. 01 was circulated within the July newsletter.	Response was sufficient to proceed with the VDS as a base for the NP
	Newsletter October 2014	As a result of feedback from the questionnaire enclosed in the last newsletter the N/Plan will progress using the Village Design Statement (VDS) as a base	Planning policy has been extracted from the VDS to use as the core policy for producing the N/ Plan.
		2015	
	14 th May 2015 Annual Parish Mtg	Once we have a draft document, this will go out for consultation with the community and Leeds City Council.	NPSG to progress the Plan
	Jan to Dec 2015	Consultant Alyson Linneger in dialogue with NSPG while formulating draft Consultation Plan	Ongoing dialogue
		2016	
	February 2016	After a draft N/Plan is formulated, it will be sent out to the Village to consult on the contents. After revision it will be sent to The Local Planning Authority who will appoint an Independent Examiner. We then have a Public Referendum for your final approval.	Report from NPSG
	Newsletter May 2016	Our Neighbourhood Plan includes policies aiming to preserve the character of the village, supporting our green spaces, trees, heritage and shaping future development.	More Plan details advised to Residents
	6 th Sept 2016	Good progress had been made on photographic views and other images to be included in the N/Plan.	Document updated as items agreed.
	4 th Oct 2016	Consultation had taken place with landowners (School / Mexborough Estate / LCC), with general support being received in regard to designating pieces of land as Green Space.	
		2017	
	Feb 2017	Draft Plan would require editing following comments received from the consultant and information from Leeds City Council	
	Feb 2017	A meeting would be arranged for April to edit the Draft Plan following comments received from the consultant and information from Leeds City Council	
	Newsletter May 2017 AGM	The draft text is currently being reviewed by LCC. Once reviewed and updated, the document will be offered for approval at a community referendum.	Plan progress advised to Residents

Date	Comment	Action
2018		
Minutes April 2018	A meeting had been held with Leeds CC Neighbourhood Planning who offered support going forward. An action list had been compiled by them	
Newsletter May 2018 AGM	Progress on the Thorner N/Plan will improve over the year. LCC are helping in developing the Plan .	Plan progress advised to Residents
5 th Nov 2018	Cllr R. Bould confirmed that he had produced a flyer to go with the newsletter.	
Newsletter Nov 2018	Flyer ref 02 sent out re policies with the newsletter. See appendix	Plan Policies update advised to Residents
2019		
2 nd April 2019	Leeds CC Planning had produced a new action plan consisting of several actions which would need to be undertaken by the Steering Group.	
3 rd Dec 2019	Cllr T. Mycock stated that subject to a couple of more meetings, the plan in draft form would be completed.	
2020		
3 rd Mar 2020	Comment was made that the Steering Group were awaiting photographs in order to complete the draft	
Covid	Covid Lockdown from March 2020	
5 th August 2020- Remote meeting	Members endorsed the schedule of Community Projects to be included in the Neighbourhood Plan.	As supplied by NPSG
1 st Dec 2020 – Annual Parish Mtg by Zoom	The final draft document had been produced and was awaiting confirmation from the Chair of the Steering Group to enable submission to Leeds CC.	
2021		
4 th May 2021 Annual Parish Mtg	A leaflet, about what the N/Plan contains and where printed copies were would be available was to be placed in the next Parish Council newsletter.	NPSG had reached a stage to apply for funding the cost of producing the N/Plan.
19 th July to 31 st August 2021	6 WEEK PUBLIC CONSULTATION	NPSG sent out questionnaire by Gmail and newsletter a week prior to the Consultation period.
3 rd August 2021	Two Drop-In sessions were held at the Bungalow, on 30/31 July, for residents to discuss the Neighbourhood Plan with a member of the NPSG.	NPSG members were in attendance at the drop-ins to answer questions
7 th Dec 2021	A summary of the changes required was being prepared for the new draft pan which would then be submitted to Leeds CC.	NPSG updating some policies to comply with latest regulations after collating results from questionnaire.
2022		
5 th July 2022	Further to minute 11. 07 June, Cllr T. Mycock had been informed that a Steering Group meeting would be required to finalise the plan for submission.	NPSG continuing revising N/Plan with LCC
2023		
	Ongoing discussion with LCC about Policy wording and drafting Conditions and Consultation Statements	NPSG to submit documents to LCC in early October

CONSULTATION - List of people and bodies consulted 2021

<u>Local Consultees</u>	<u>Comment</u>
All Thorner Village Residents	9 replies
4 No Local farmers	No comment
Mexborough Estates	no comment
Oaklands Manor	LETTER sent - no comment received
Victory Hall	No comment
St Peters Church	No comment
Bowling Club	Mail not recognised
Shadwell PC	No comment
Barwick & Scholes PC	No comment
Scarcroft PC	Comment only
<u>Statutory Consultees</u>	<u>Reg 14 leaflet with NP details sent with email</u>
The Coal Authority	No comment
Homes and Communities Agency	no comment
Natural England	no comment
The Environment Agency	no comment
English Heritage	no comment
Highways Agency;	no comment
BT	no comment
Person granted a licence Gas Act	no comment
EE	no comment
Vodafone	no comment
Primary Care Trust	no comment
Electricity Act 1989	No issues raised
Yorkshire Water Sewage	no comment
Yorkshire Water Water Supply	no comment
NHS Care centres and services	no comment
Leeds Involving People	no comment
Leeds MDC	Full extensive reply
Voluntary Action Leeds	no comment
Gypsy & Traveller Exchange	no comment
C of E Leeds	no comment
Church Maintenance Charity	no comment
Chamber of Commerce	no comment
Age UK	no comment
Leeds Society for the Blind	the NPPF with reference to Paras 96 & 97
Old Peoples Forum	Please contact hello@forumcentral.org.uk
Sport England	the NPPF with particular reference to Pars 96 and 97
Theatre Trust	no comment
Yorkshire Wild Life Trust	Reply received with details
Yorkshire North East Forestry	Wrong email?
Yorkshire Gardens Trust	no comment
CLA	no comment
Sustrans	the NPPF with reference to Pars 96 and 97
WYJ S	paragraphs 171 and174 of the NPPF
Countryside Officer	paragraphs 171 and174 of the NPPF
Civic Trust	paragraphs 171 and174 of the NPPF
Ancient monuments Society	paragraphs 171 and174 of the NPPF
Twentieth Century Society	paragraphs 171 and174 of the NPPF
Woodland trust	paragraphs 171 and174 of the NPPF
DEFRA	paragraphs 171 and174 of the NPPF

Note that other businesses identified are owned by village residents or landowners and would therefore receive notification as a resident or landowner.

In October 2019, letters were sent to local landowners, informing them about the Neighbourhood Plan and inviting them to discuss their intentions for their land.

They were also sent a further letter (the same as for the Statutory Stakeholders) prior to the Regulation 14, Pre-Submission Consultation (see appendices).

Summary of findings from the events and questionnaires

In the main, relevant comments received on the draft Plan after the Regulation 14 consultation in 2021 referred to technical details of policy wording and compliance with current planning regulations which have changed since the N/Plan was commenced in 2013. Please refer to **appendix 02**.

By involving residents, business owners and other stakeholders at key stages in the development of the Thorner Parish Neighbourhood Plan, the plan is both evidence based and has been shaped by local opinion, with policies being tested as they have been developed. There has been detailed analysis after each consultation event or questionnaire which has informed the next step in drafting the plan. At all stages the NPSG has liaised with Leeds City Council to ensure compliance with current regulations and policies.

Regulation 14, Pre-Submission Consultation

This consultation took place over a six-week period (19TH July to 31ST August 2021). The comments received were collated by the NPSG meeting to consider the comments and amend the plan as agreed. The revised document was then submitted to the Parish Council for final approval ahead of submission to Leeds City Council. The comments and responses are detailed in the appendices.

Conclusion:

The draft Neighbourhood Plan is now ready to be submitted to Leeds City Council who will publicise it for a further six weeks and then forward it, with accompanying documents and all representations made during the publicity period, to an Independent Examiner who will review it and check that it meets the 'Basic Conditions'. If the Plan successfully passes this stage, following any modifications, it will be put forward for referendum. The referendum question will be a straight "yes" or "no" on the entire Plan, as set out by Neighbourhood Planning Regulations. People will not be able to vote for or against individual policies. If 50% or more of respondents vote for the Plan, it will be brought into force ('Made') and become part of the District-wide planning policy. This Consultation Statement and the supporting Appendices are provided to comply with Section 15(2) of part 5 of the 2012 Neighbourhood Planning Regulations.

Terms of Reference - Thorner Neighbourhood Plan Steering Group

1. Introduction.

Thorner Parish Council (TPC) has determined that a Neighbourhood Plan (NP) should be produced in pursuance of the Government's Localism Act 2011.

In order to produce the plan TPC has decided to establish a Steering Group (SG) to commence preparation of a draft NP that will be submitted to Leeds City Council (LCC) for independent inspection and finally put to a public referendum. TPC has advised LCC of the intent of the village to submit a NP and TPC will be the body that formally submits the NP to LCC.

The PC has tasked the SG with developing the NP, as well as any other sub-group formed to undertake the various aspects of the work involved in producing the NP. On completion of the NP the SG will be dissolved. Operating procedures are to be the same as those of TPC including codes of conduct.

The NP addresses all matters indicated by the Localism Act 2011 and will seek to:

- Identify all the important aspects of life in the village which are to be considered in planning for the future.
- Bring forward proposals which will enhance the quality of life in the village in the years to come.
- Provide a framework for future land usage within the village.

2. Terms of Reference

Membership of the Steering Group.

- The SG will be formed from residents and the local business community of Thorner, together with relevant stakeholders. Councillors TPC may also be members of the SGC and it is recommended that at least two members of TPC should be members. The TPC chairman and Vice-Chair will be ex-officio members of the SG.
- Initial membership of the SGC should be no more than 15 persons. However, the SG may form sub-groups to carry out research and specific tasks. A quorum will be two thirds of the SG.
- The SG membership should be appointed each year at the Parish meeting and the names recorded.
- The Local Planning Authority is obliged to provide assistance under the statutory provisions of the Localism Act 2011.

3. Roles and Responsibilities.

The SG will:

- Promote the process of preparing the NP, be encouraged to participate and provide their views and opinions on the specific topics which are covered during the preparation of the Plan.
- Arrange meetings and appoint sub-groups to gather views and consult on emerging policies which are considered appropriate for incorporation in the NP
- Assess existing evidence about the needs and aspirations of the village.
Liaise with relevant organisations and stakeholders to secure their input in the process.
- Develop guiding principles and policies to guide the NP.
- Approve all output of all sub-groups established to produce the NP.
- Appoint a Drafting Sub-Group.
- Inform TPC of progress on a regular basis. The SG will operate as an advisory group without delegated decision-making powers and must submit its proposed work programme to TPC for approval on at least a monthly basis.

4. The Drafting Sub-Group will:

- Carry out all research, communication and consultation necessary to deliver the NP for approval by the SG.
- Develop sustainability appraisal or other assessments requested by LCC prior to the NP being submitted.
- Support the SG in efforts of engagement and consultation with the local communities throughout the plan making process.
- Appoint professional planning or other relevant expertise that may be required during the development of the NP. Drafting of the NP may require professional assistance to ensure conformity

Terms of reference – 24th June 2013

to national and local policy and that the NP will be sound and robust enough to withstand independent examination.

- Analyse the results of questionnaires or other evidence received during the planning process and use them to prepare the NP.
- Support the Local Planning Authority and the PC during the referendum process.

5. Parish Council will:

- Support the preparation of the NP by providing sufficient assistance and financial resources to ensure the plan is prepared expeditiously. To comply with statutory requirements only TPC can determine if the proposed SG financial budget is acceptable before allocating funds. All expenditure will be shown in TPC annual accounts under an appropriate heading.
- Facilitate, if required, contact with the relevant statutory bodies or parties who must be consulted during the plan making process.
- Carry out all statutory duties contained in the Neighbourhood Plan (General) Regulations 2012 and engage with LCC during the referendum process of the plan.
- Following the preparation of the NP, when the SG have agreed with TPC that their work is complete, submit the NP to the Local Planning Authority for inspection and independent examination.
- All Members of the Steering Group Committee and sub-groups formed will:
- Declare any personal interest that may be perceived as being relevant to any decision or recommendation made by the group. This may include membership of an organisation, ownership or interest in land or a business or indeed any other matter likely to be relevant to the work undertaken by the SG.
- Ensure that there is no discrimination in the plan making process and that it is a wholly inclusive, open and transparent process to all groups in the village and to those wishing to undertake development or be involved in the plan making process.
- Work together for the benefit of the communities established within the Parish.
- Treat other members of the Group with respect and dignity, allowing members to express their views without prejudice and interruption.

6. Group Chairman.

- The SG is to appoint a Chairman and Deputy Chairman from their number. TPC will appoint a chairman to initiate the SG procedures.
- If the Chairman is not present, the Deputy Chairman shall take the meeting. If neither is present, members will elect a Chairman for the meeting from amongst their number.

7. Frequency, Timing and Procedure of Meetings.

- The SG will usually meet monthly (subject to agreed research time tables). Sub-groups may meet more frequently as necessary. The Chairman of the SG will convene meetings. The time and place will need to be agreed with TPC Clerk and any costs allocated in the NP budget.
- All meetings shall be open and may be attended by residents, the local business community and other relevant stakeholders.
- The SG and its sub-groups shall keep minutes of meetings which will be open to public scrutiny. These are to be published on the Thorner Village website and displayed on the Village Notice Boards. In the event of any disputes the matter must be referred to TPC to resolve.
- Notices, Agendas, Minutes and associated papers will be emailed where possible to all SG members who have attended any SG meeting and copied to the Clerk of TPC.
- The SG Chairman will regularly update and report its progress to the Clerk of the PC ensuring that she, as the responsible financial officer for TPC, is aware of the on-going budgetary implications associated with the project. A spending budget will need to be agreed as a priority to allow TPC to determine and allocate available funding.
- The TORs will be reviewed throughout the project. Any proposed changes to the SG must be advised to TPC for approval to ensure the NP goals are being met.

APPENDIX 02 - 1a

Statutory Bodies Consultation replies

- 1 -

No	Name	Comment	Action
1	Planning North	Government planning policy, within the National Planning Policy Framework (NPPF), identifies how the planning system can play an important role in facilitating social interaction and creating healthy, inclusive communities. Encouraging communities to become more physically active through walking, cycling, informal recreation and formal sport plays an important part in this process. Providing enough sports facilities of the right quality and type in the right places is vital to achieving this aim. This means that positive planning for sport, protection from the unnecessary loss of sports facilities, along with an integrated approach to providing new housing and employment land with community facilities is important.	Promoted within the Plan
2	Sport England	Sport England works with local authorities to ensure their Local Plan is underpinned by robust and up to date evidence. In line with Par 97 of the NPPF, this takes the form of assessments of need and strategies for indoor and outdoor sports facilities. A neighbourhood planning body should look to see if the relevant local authority has prepared a playing pitch strategy or other indoor/outdoor sports facility strategy.	The Plan demonstrates the need to retain existing sports facilities
3	DEFRA	Generic advice on natural environment impacts and opportunities Sites of Special Scientific Interest (SSSIs). Local authorities have responsibilities for the conservation of SSSIs under s28G of the Wildlife & Countryside Act 1981 (as amended).	INFO
		Air quality impacts on SSSI's The interest features of affected designated sites may be sensitive to impacts from aerial pollutants. To determine any likely air quality impacts arising from this proposal, an initial screening for air quality impacts should be completed. Simple screening tools are available via the internet, such as the Simple Calculation of Atmospheric Impact Limits (SCAIL) model: http://www.scail.ceh.ac.uk/ .	"SSSI noted in the VDS and needs adding to the Plan Norwood Bottoms Wood is partly within the boundary of the Plan. There are no buildings, noxious fumes or toxic runoff that we are aware of.
		Biodiversity duty Your authority has a duty to have regard to conserving biodiversity as part of your decision making. Conserving biodiversity can also include restoration or enhancement to a population or habitat.	Promoted within the Plan
		Protected Species Natural England has produced standing advice[1] to help planning authorities understand the impact of particular developments on protected species. We advise you to refer to this advice. Natural England will only provide bespoke advice on protected species where they form part of a SSSI or in exceptional circumstances. "	Promoted within the Plan
		Local sites and priority habitats and species You should consider the impacts of the proposed development on any local wildlife or geodiversity sites, in line with paragraphs 171 and 174 of the NPPF and any relevant development plan policy. There may also be opportunities to enhance local sites and improve their connectivity	Promoted within the Plan
		Ancient woodland, ancient and veteran trees You should consider any impacts on ancient woodland and ancient and veteran trees in line with paragraph 175 of the NPPF. Natural England maintains the Ancient Woodland Inventory which can help identify ancient woodland.	Refer to Saw Wood and VDS
4	National Grid	National Grid has identified that it has no record of such assets within the Neighbourhood Plan area. "	No action required
5	Shadwell PC	Minor comment not relevant to NP	No action required

Statutory Bodies Consultation replies

- 2 -

6	Yorkshire Wildlife Trust	Policy A1 – Design, we would strongly recommend the incorporation of the wish to see development designed in line with Building with Nature standards. "	Adopt these standards
		The Building with Nature standards would bring all policies in line, including Policy A3 – Garden Development, Policy A5 – Parking, Policy A6 – Flooding, as well as Policy B3 – Views, Policy B4 – Pedestrians and Cycle Links. "	Adopt these standards
		"Policy B1 – Local Green Spaces fails to identify statutory and locally designated sites within and adjacent to the plan boundary. Saw Wood and Kidhurst Wood are mentioned as Local Green Space, however, are not considered for their designation under the local plan as 'Local Wildlife Site' (LWS). This omission downplays the value of the site as LWS (formerly known as Sites of Importance for Nature Conservation) which are of great significance as core wildlife-rich habitats of substantive nature conservation value and taken together with Sites of Special Scientific Interest (SSSIs), they represent a major national asset, essential to nature's recover	Add into the plan
		"The plan does not identify Norwood Bottoms as a SSSI, a nationally important site, or as an area of Ancient Woodland, a habitat which is considered to be irreplaceable under the National Planning Policy Framework (NPPF).	Adopt these standards - SSSI noted in VDS on which Plan is based
7	Local Access Forum	<p>The LAF makes the following comments and, for clarity and consistency, some suggestions for minor amendments.</p> <p>1. The LAF supports Policies A5 and B4.</p> <p>"2. The Forum is pleased to see the inclusion of Plan 08 showing the public rights of way in and beyond the Neighbourhood Plan area. For ease of identification and reference we suggest the Plan includes for each PROW the number as shown on the Definitive Map.</p> <p>3. In the Explanatory Note to Plan 08 footpaths should be replaced by rights of way. The details on the map should be replaced by These. Rather than describe how the ways are denoted it would perhaps be easier to include the symbol with Public Footpath or Public Bridleway alongside. The claimed routes in green should also be included.</p> <p>4. Page 8 – 2.3 Thorner Present – after bridleways add (which give access for horse riders and pedal cyclists as well as walkers)</p> <p>5. Page 20 – Replace footpath by footway and footpaths by footways.</p> <p>6. Page 30 – Explanation/Justification/Evidence – In line 1 replace footpaths by rights of way. in line 2 - add and bridleways after public footpaths.</p> <p>7. Page 34 – B – In the heading replace Footpaths by Public Rights of Way. In line 4 - replace footpath by Public Rights of Way. In line 5 add and bridleways after footpaths.</p>	<p>Need to update the footpath map to include recent changes which were originally noted in the VDS.</p> <p>Agree wording to fit</p> <p>Agree wording to fit</p> <p>Agree wording to fit</p> <p>Agree wording to fit</p> <p>Agree wording to fit</p> <p>Agree wording to fit</p>
8	Leeds City Council	Leeds City Council Response to the Thorner NP Pre-Submission Consultation (Reg 14). The draft Plan is a pragmatic, concise and clear one and that is to be welcomed. Getting to this stage is a real achievement, particularly given the challenges faced by the parish council during the Plan's preparation.	Positive support
		<p>General Comments</p> <p>Since work on the preparation of the neighbourhood plan commenced, there have been a number of significant changes in national and local circumstances. At a national level, changes to national planning policy (including neighbourhood planning) have taken place at numerous intervals and the plan captures this. The Plan could usefully make reference to this, in the Foreword/Introduction.</p> <p>The positive nature of the document is welcome, aligning well with the objectives of current local and national planning policy.</p>	Adopt these standards

Statutory Bodies Consultation replies

- 3 -

8	Leeds City Council	<p>However, there are some difficulties with the ording of some policies and lack of clarity on how some of these should be interpreted but that is natural at this stage and the comments set out below offer suggestions on how to address this. This will also avoid frustration once the Plan is 'made'. " See below - we need to rephrase in places and be definitive</p> <p>There is an opportunity to include statutory and non-statutory nature conservation designations (Local Wildlife Sites and Local Geological Sites) as well as the Leeds Habitat Network. The Neighbourhood Plan may choose to add extensions to the Leeds Habitat Network where locally important features exist in addition to the Leeds Habitat Network.</p> <p>On page 27 the reference to the protection of trees is welcomed. May wish to consider broadening the policy out to include those trees which are important for biodiversity and carbon storage?</p> <p>The NP refers to Pedestrian & Cycle Links (Policy B4: Protect and enhance existing footpaths and cycle links) and aspirations for their improvement, extension and protection and this is welcomed. However, in the introduction and objectives sections omits to mention public bridleways (which give access for horse riders and pedal cyclists as well walkers and would assist connectivity aims). There are four in the Thorer parish, together with separate public footpath / bridleway claims. It would be more inclusive and representative to refer to public bridleways (and Byways) as well as pedestrian and cycle links. "</p> <p>The intention to support PROW improvements in accordance with the Rights of Way Improvement Plan is welcomed. The Council's website version of the Definitive Map (the legal document of public rights of way) can be found at: https://www.leeds.gov.uk/parks-and-countryside/public-rights-of-way/definitive-map</p>	<p>Add LWS sites</p> <p>Define ??</p> <p>Review and clarify</p> <p>Map to agree & insert</p>
<p>Timing/Risks</p> <p>As you may be aware, Government have announced a programme of planning reform. An awareness of general and possibly significant change in the future should be borne in mind.</p>		INFO	
<p>A Basic Conditions Statement will need to be prepared to accompany of the submission of the plan for independent examination which sets out how the plan meets the Basic Conditions and other relevant legal requirements.</p>		NOTED	
<p>Mapping</p> <p>Overall, the maps are clear and the use of high-resolution versions on the Thorer Parish Council website, with links provided within the plan document is welcomed. Consideration should be given to how to show the extent of the spatial policies of the plan on an overall "Policies Map".</p>		<p>Discuss with LCC define Policies Map. Add map if feasible</p>	
<p>Introductory Sections - Foreword – a good and clear forward. Perhaps also include a reference to business? Section 1.1 Background – this is a helpful and clear background.</p>		Positive Comment	
<p>Section 1.3 Why Thorer needs a Neighbourhood Plan - the reference to projected housing numbers is out of date, suggest revise to refer to the issues at the time.</p>		Figures revised	
<p>Section 1.4 Initial Consultation and Adoption of the VDS – this section would benefit from being slimmed-down with a focus on the VDS.</p>		REVIEW & IMPLEMENT	
<p>2.1-2.3 Thorer Past and Present – this is a positive and useful addition to the Plan.</p>		Positive Comment	
<p>The Thorer Vision is locally distinctive, clear, and deliverable. May wish to say something about how the Vision was created and endorsed. Discuss Wish to preserve rural Character, PC at the time.</p>		Review	

Statutory Bodies Consultation replies

- 4 -

8	Leeds City Council	<p>Objectives The objectives are well thought out and clear. A particular strength of the Plan. Planning Policies for Thorner The use of explanation/justification/evidence makes the policy sections clear, readable, and logical.</p>	Positive Comment
		<p>Policy A1 - Design The Policy would benefit from a brief introduction, for example 'Development should...' Not all of the points listed could be referred to as 'key guiding principles. For example, "Height, scale..." Building for Life 12 was replaced by Building for a Healthy Life in 2020, principles are very similar with greater focus on health and wellbeing. The use of 'reflect' is understood but it may be better to refer to 'respect'. Reflect suggests mimicking or copying local character but it is also the case that good design is able to deviate from a local style whilst still respecting this character in many instances.</p>	<p>We already have an introduction, but slight word change may help.</p> <p>Rewrite key principles. Adopt Building for life 2020.</p> <p>Reflect - rewrite to avoid planning confusion.</p>
		<p>Policy A3 - Garden Development - BACKLAND DEVELOPMENT Whilst preventing inappropriate infill development in gardens is an objective of many Neighbourhood Plans – and a valid planning concern - the policy is not entirely clear on how it should be interpreted. Also, the wider intention is unclear. " The policy states that garden developments will only be supported where they do not significantly increase the density of existing development in the surrounding area. This raises the question of what is meant by 'significant increase' and how the Council should interpret that in the determination of planning applications in the future. Further thought is therefore needed to be given to this. Perhaps a policy resisting "backland" development would be better? Followed by links to preservation of croft and toft/burgage plot form mentioned in the Thorner CAA and NDS (which has come up in considerations of single dwelling to garden apps, for example).</p>	Review and reword
		<p>Policy A4 – Light Constraints The policy would benefit from an introduction The objective of this policy is supported, it should be noted that the vast majority of cases new security, decorative or feature lighting at residential properties does not require planning permission. However, the importance of this issue to the village is well understood and a policy covering the issue is encouraged.</p>	Agree to reword and define as suggested.
		<p>Policy A5 – Parking The policy would benefit from an introduction. This is a good and clear policy. There is an opportunity for this policy to link to the Council's Neighbourhoods for Living SPD. This includes good principles and examples of parking design.</p>	Agree to reword and define as suggested.
		<p>Policy A6 - Flooding The policy would benefit from an introduction. The Council is keen to have developments apply sustainable drainage systems where practicable for new, renovation or retrofit developments. The encouragement of water reuse, rainwater harvesting or the possibility of limiting surface water discharges off site with roof runoff directed to garden areas would support our standards as well as enhance the Parish Council's overall vision for the sustainability of drainage systems in the area. A statement about sustainable drainage in the Plan would be sufficient.</p>	Agree to reword.
		<p>Policy B1 – Local Green Spaces Should be amended to: "The following areas are designated as Local Green Space (LGS) where development should only be allowed in very special circumstances in keeping with local and national policy on Green Belt (conflict which would be difficult to address at decision making stage) "</p>	Adopt these standards

Statutory Bodies Consultation replies

- 5 -

8	Leeds City Council	<p>Policy B2 – Trees The policy would benefit from an introduction. The objectives are welcomed but it is unclear how the phrase “of good arboricultural value” should be interpreted. This should be defined in the supporting text – ideally to the relevant British Standard classifications (which suggests Category C trees and above are of arboricultural value). Perhaps split the first point so the part about retaining trees is first and then new bullet for replacement? This would give greater emphasis to tree protection.</p>	Agree to reword and define as suggested.
		<p>The Council is hoping to have new tree replacement policy in the Local Plan update which is based on the characteristics of the tree removed so perhaps the wording should be: <i>‘If tree removal is demonstrated to be unavoidable, trees should be replaced in accordance with the latest Local Plan policy and if possible, including a tree replacement rate the same or better than the Local Plan.</i></p>	Adopt these standards
		<p>Policy B3 – Views The policy would benefit from an introduction. Overall, a good and well thought out policy.</p>	Reword - we have an introduction for each Policy section
		<p>Policy B4 – Pedestrian and Cycle Links -the policy would benefit from an introduction. Overall, a good policy. Implementation Refer to the Parish Council rather than “the Council” A clear and helpful addition to the Plan.</p>	Review and reword - we have an introduction for each Policy section
		<p>Appendices These are clear and well laid out. These are all helpful for the Pre-submission Plan but recommend that consideration is given to which of these could usefully be included in the Submission Plan.</p>	Review with LCC before submission
		<p>Appendix 1 (Community Projects) places emphasis on improvements to the public footpath network rather than all public rights of way as a whole, although public bridleways are mentioned.</p>	Check with other changes suggested
		<p>The plan shown on Page 69 (Appendix11 Public Footpath Plan) could usefully indicate the existence of other Public Rights of Way as well. This plan shows the Leeds Country Way, a Key Recreational Route, which subsists within the parish but isn’t referred to in the text of the document.</p>	Agreed

APPENDIX 02 - 2

Residents' Consultation replies

Residents' Comments from Consultation

Question	Comment 1	Comment 2	Comment 3	NPSG RESPONSE
Do you agree with the proposed vision for Thorne?	I would like to see more benefits for the residents past the school (cat 4). Whilst I agree with most of the plan, it seems it doesn't serve all. I would like to see better parking facilities. Like using the green space behind the kirkefield bus stop and use it for like a park and walk scheme. So it can be used by walkers and parents picking up children. Also you can use it as a charging point for cars. Also I would like to see more bins around the village.	What a stupid question	I am fully in support of the principles addressed	Comments 1 & 2 not relevant.
Do you agree with the proposed objectives of the plan?		What a stupid question	In addition to the objective relating to new development there ought also be reference to encouragement of permitted modifications/extensions/fixtures to existing building being in keeping with surroundings, neighbouring buildings and local character.	Comment 1 not relevant. Comment 2 - is encapsulated we think in the Plan covering all new development
Do you agree with the proposed design policies?	I see that the policy is to oppose infill development, but offers to alternative. Should the boundaries of the village extend? There are no properties to convert, save the shop and methodist chapel.	Too waffly	Some comment on how adherence to fighting policies will be encouraged. In many instances enforcement is not possible, and so repeated reminders / education / promotion of good practice within the of the community is needed to refresh residents' understanding of what it means to be a "dark village".	Comments 1 we think is covered in the plan Comment 2 not relevant. Comment 3 - need to check Plan wording but as noted enforcement is always an issue.
Do you agree with the proposed policies on green space?	I would like to see more benefits for the residents past the school (cat 4). Whilst I agree with most of the plan, it seems it doesn't serve all. I would like to see better parking facilities. Like using the green space behind the kirkefield bus stop and use it for like a park and walk scheme. So it can be used by walkers and parents picking up children. Also you can use it as a charging point for cars. Also I would like to see more bins around the village.	There isn't enough green space		Comments 1 & 2 not relevant.
Do you agree with the proposed community objectives?		Nothing worthwhile ever seems to result from neighbourhood plans	I hope the Parish Council will be proactive in pursuing these objectives	Comments 1 not relevant. Comment 2 - refer to section on monitoring and implementation.
Any other comments	There is nothing in the content of the document that is new or innovative thinking. Perhaps that is not a bad thing. The plan re-caps many of the principles and action points of the Parish Plan, Parish Plan Review and Village Design Statement. What this illustrates though is that there are a number of action points that have been in place for 10 or more years and supposedly endorsed by residents and the Parish Council, where nothing has been done to promote, execute or control. (eg lighting, planning issues, parking, village gateways - inappropriate additions to building in the conservation area.) There's clear evidence of this in a walk around the village. Whilst I understand that much or what is proposed cannot be enforceable I'd like to see an indication of who will be responsible for monitoring what is being achieved - progress towards action points, reminders where action points/recommendations are ignored or forgotten. Some of these actions raised provide a useful agenda for future Parish Council attention and implementation.			As stated in the plan - the N/Plan is based on the Village Design Statement. Again - refer monitoring and implementation, plus the aspirations in the Plan. It is upto to the Public to make the Parish Council adhere to the provisions of the Plan

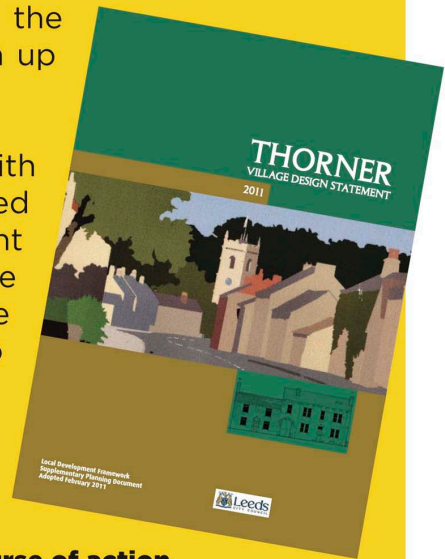
WE NEED YOUR PERMISSION...

THORNER'S NEIGHBOURHOOD PLAN

Thanks to everyone who has contributed to the process of developing a Neighbourhood Plan up to this point.

Having considered the options available with Planning Aid, England, it has been suggested that we now take advantage of the excellent work that many residents in the village undertook in developing the current Village Design Statement (VDS) which is available to view on the Parish Council website

www.thorner-parish-council.org.uk



In order for the Parish Council to pursue this course of action we require a mandate from YOU the residents of the village.

The proposal we are consulting on is that:

The current VDS, dated February 2011, should form the substantial basis of the Neighbourhood Plan. This may require some updating and slight modification to fulfil the detailed requirements of Neighbourhood Planning as determined by Government legislation and regulation.

You will also be consulted about the Neighbourhood Plan prior to it being sent to Leeds City Council for them to consider. The final draft will be published on the Parish Council website with hardcopies also available to view locally at the Post Office and village shop.

Please respond to the question below and return this form to;

- a local councillor
- OR** the collection points in the village shop or the post office
- OR** scan and e-mail to the Clerk; clerk@thorner-parish-council.org.uk

By MONDAY 25 AUGUST

I support the use of the Thorner Village Design Statement as the substantive basis for the development of the Neighbourhood Plan, in order to give the community greater control over the type of development that may take place;

YES / NO (please circle)

Name:

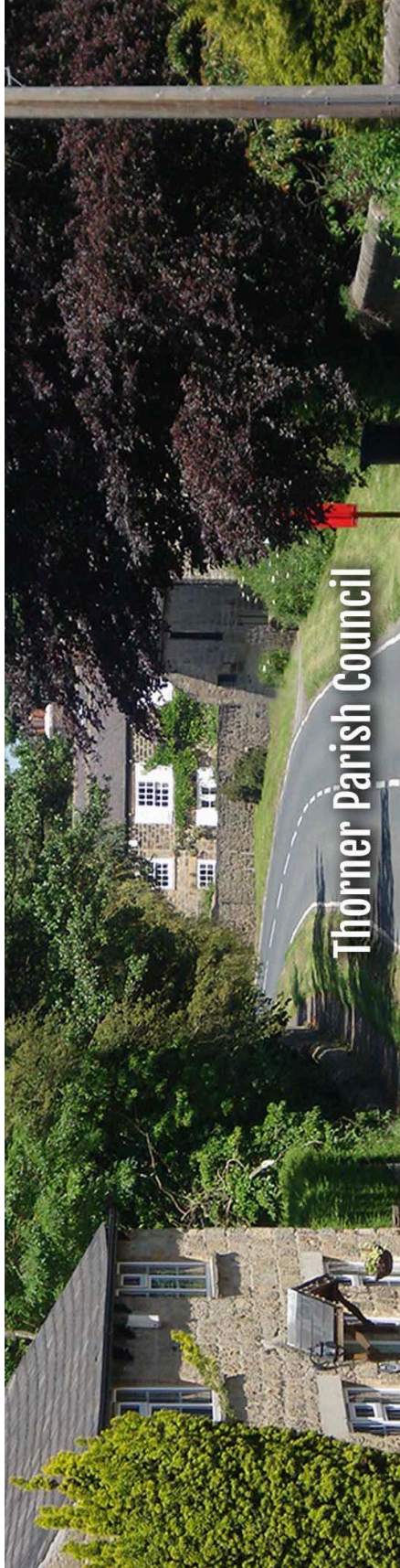
Address:

.....

.....

.....

THANKYOU



[Home](#) - [Council](#) - [Community Information](#) - [Contact Us](#) - [Millennium Green](#)

Neighbourhood Plan

Under Regulation 14 Thorner Neighbourhood Plan Steering Group (TNPSG) must carry out a public consultation and seek your comments on the presubmission draft Thorner Neighbourhood Plan.

The Localism Act 2012 gave local communities the opportunity to set out locally specific policies for the development and use of land, through the creation of a Neighbourhood Plan. The decision to draw up such a Plan is optional, but allows us to set out proposals for the growth of our community over the next 15 years.

A Neighbourhood Plan cannot be used to impede proposed developments which have already gained planning consent. It should also be in general conformity with the strategic policies for the area, as set out in the Leeds Core Strategy. The Neighbourhood Plan cannot stop all development, but it should define the nature and extent of development acceptable to, and required by, the local community in Thorner.

[Privacy Statement](#)

[Accessibility Statement](#)

© Thorner Parish Council. All Rights Reserved. Design by Vision ICT Ltd

APPENDIX 03 - 3

Thorner Gala Stall enabling resident's to discuss the neighbourhood Plan



APPENDIX 04 - 1a

Reg. 14 Notification Flyer inserted inside Parish Newsletter prior to Consultation - Side 1

Reg. 14 Notification Flyer inserted inside Parish Newsletter prior to Consultation - Side 2

Our Vision for Thorne

"Our vision is to maintain the character of Thorne as a distinctive rural community set in a 'special landscape' setting, conserving its rich historic and architectural heritage and ensuring that new development reflects the qualities and characteristics that people value in the Parish.

Existing green spaces within the parish will be protected and retained for the benefit of the community, which will also benefit from enhanced pedestrian and cycle connectivity."

A set of objectives was derived from the Vision and is shown opposite.



If you have questions about the Plan:

Thorne NP Steering Group will be holding drop in sessions at the Bungalow, 31A Main Street, LS14 3DX

Dates and times will be **Fri 30th July 2 to 4pm** & **Sat 31st July 10am to 12pm.**

Please give feedback on the Plan by:

Using the comments form on the TPC website:
<http://thornepc.uk/neighbourhood-plan>

Or, in writing to TNPSC using the post box at The Bungalow as above.

OBJECTIVE 01

- To ensure that new development is designed to reflect the local character and distinctiveness of the village.
Policies: A1, A2, A3, A4, A5

OBJECTIVE 02

- To support the protection of the landscape setting and important views into the surrounding countryside.
Policies: B2, B3

OBJECTIVE 03

- To protect open green space within the village together with significant trees.
Policies: B1, B2

OBJECTIVE 04

- To support measures that enable traffic and pedestrians to move safely and freely through the village.
Policies: A1, A5, B4

OBJECTIVE 05

- To improve connectivity in the village by ensuring cycleways and footpaths link key village amenities and the open countryside.
Policies: B4

OBJECTIVE 06

- To support measures that reduce the impact of new development but do not increase flooding in the parish.
Policies: A1, A6

After the Consultation Period

All comments received will be collated and any necessary changes to the Plan will be made. The final Plan will then be submitted to Leeds City Council and to an Independent Examiner who ensures the Plan does not contravene local or national policies and that the Plan is lawful. When this process is complete the final Plan, after amendments suggested by the examiner, will be put to the electorate of Thorne in a referendum.

The community may then accept or reject the Plan by a simple majority of those voting. We hope to hold the referendum in Spring 2022.

The full Plan version is available to read on the **Thorne Parish Council Website**

<http://thornepc.uk/neighbourhood-plan>

If you need a paper version a limited number of copies will be available from the Deli, The Fox Pub, the Mexborough Pub and The Bungalow.

APPENDIX 04 - 2

Reg. 14 email sent to Statutory Bodies and others account from Dedicated Gmail account

Wednesday, September 20, 2023 at 14:42:03 British Summer Time

Subject: 05 Thorner NP - Reg 14 Consultation
Date: Wednesday, 20 September 2023 at 14:40:57 British Summer Time
From: Graham Castle <consultation.n.plan.reply@gmail.com>
To: **VARIOUS CONSULTEES**

Regulation 14 Pre-Submission Consultation Notification



Dear Consultee,

In accordance with Regulation 14 of The Neighbourhood Planning (General) Regulations 2012 (as amended), Thorner Parish Council is undertaking a formal public consultation and would like to invite comments from organisations and individuals who live, work or carry out business in the Thorner Neighbourhood Area on its Pre-Submission Draft Neighbourhood Development Plan.

The Plan sets out a Vision for the future of Thorner up to 2033 and contains policies on the following topics:

- Design
- Building Extensions
- Garden Development
- Light Pollution
- Parking
- Flooding
- Local Green Spaces
- Trees
- Views
- Pedestrian & Cycle Links

The consultation runs between Mon 19th July and Tuesday 31st August 2021.

To view the Neighbourhood Plan and supporting information, please visit the Thorner Parish Council website:

<http://thornerpc.uk/neighbourhood-plan>